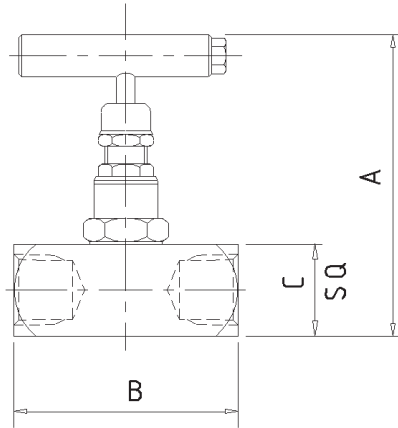


Product Data Sheet	F Type Needle Valve
---------------------------	----------------------------



The 'F' Type Single Isolating Needle Valve is designed for the safe and reliable isolation giving bubble tight shut off, non-rotating & anti-galling tip and dynamic self-adjusting spindle seal to give long service life in a variety of applications.

Part No.	Connections Size	A	B	C	Weight (Kgs)
F25	1/4"	3.6	2.1	1.1	0.5
F38	3/8"	3.6	2.4	1.1	0.5
F50	1/2"	3.6	2.6	1.1	0.5
F75	3/4"	3.6	2.9	1.5	0.8
F10	1"	3.6	3.2	2.0	1.4

Key Features of the Oliver Needle Valve range

- Non rotating tip - self centering & anti-galling
- Piston ring - gives dynamic adjustment of gland seal in response to pressure change
- Anti-blow out spindle - a major safety feature
- Secure seal - precision machined to give leak free operation for the life of the valve. Available in either PTFE or Grafoil

Standard Specification

Pressure: 6000psi	Packing: PTFE	Handle: T-Bar	Bore: 0.21" (5.4mm)
Temp: 240 deg C	Thread form: NPT	Seat: Metal to metal	CV: 0.46

Ordering Code

	(Typical example) →	F		50		S	/	BT	/	AT
Type										
Female x Female										
Size										
25 - 1/4" 75 - 3/4"										
38 - 3/8" 10 - 1"										
50 - 1/2"										
Material										
S - 316S31 Stainless Steel										
C - 230M07 Carbon Steel										
M - Monel (400)										
HC - Hastalloy (C276)										
(Others available)										
Optional Connections (NPT Standard)										
BT - BSP Taper										
BP - BSP Parallel (top sealing)										
SW - Socket Weld										
Options										
AG - Grafoil										
AT - Anti-Tamper										
HL - Handle Locking										
HL PI - Handle Locking + Position Indicator										
HP - 10000 psi										
HW - Hand Wheel										
LT100 - Cryogenic Head Unit (-100°C)										
LT200 - Cryogenic Head Unit (-200°C)										
MT - Metering Tip										
MTG - Mounting Holes x 2										
NA - NACE MR-01-75 (latest revision)										
OXY - Oxygen Cleaned										
PK - PEEK Soft Tip (not available oxygen cleaned)										
PM - Panel Mount										